

液晶屏显示缺陷机器视觉检测设备



液晶屏显示缺陷机器视觉检测设备是用于检测 LCD 屏幕的亮点、黑点等显示缺陷以及显示亮度、分辨率、对比度等相关参数的专用设备。设备重点解决人工检测中错检、漏检等一些疑难现象,帮助客户在节约人力成本的同时,严格把关产品出厂质量,进一步提升其产品的市场竞争力。

- 设备采用高分辨率面阵工业相机静止拍照,不需要辅助运动机构。
- 设备采用多颗高精度低畸变 50mm 焦距工业镜头,保障了成像所需的视野。
- 设备结构简单,体积小,稳定可靠。
- 设备综合成本低,检测效率高。

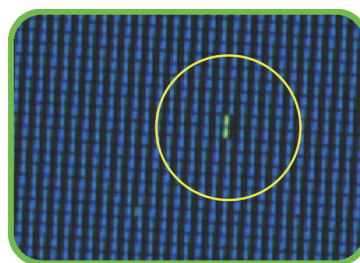
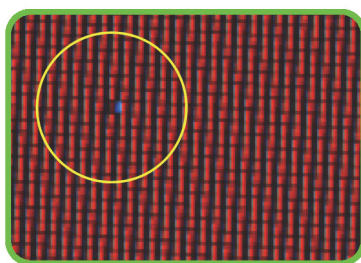
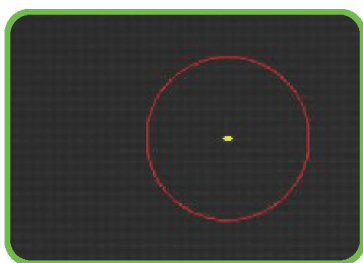
Visual Inspecting Machine for LCD Display Defects

Visual Inspecting Machine for LCD Display Defects is used to measure LCD technical parameters such as bright spots, black spots, display luminance, resolution, and contrast ratio, etc. It overcomes human errors from manual inspection, which will help customers controlling the quality strictly, thus more competitive in the market.

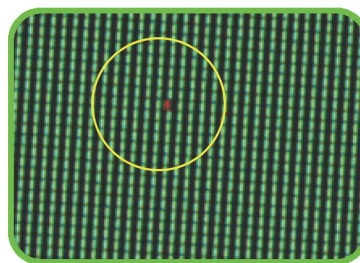
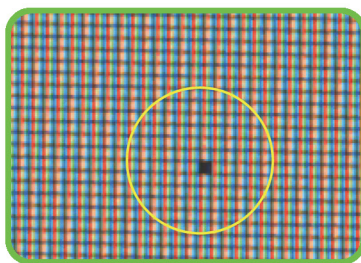
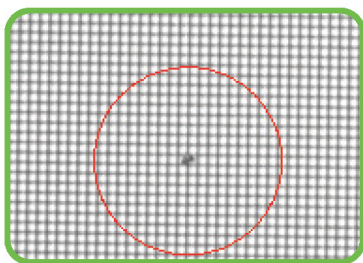
- Using high-resolution industrial camera static pictures without the need of auxiliary motion mechanism.
- Adopting multiple high precision and low distortion 50mm focal length industrial lens to meet image view requirement.
- Simple structure, small size, stable and reliable performance.
- Low cost, high efficiency.

技术指标 Technical Specifications

项目检测 Inspection Items			
亮点、黑点、亮斑、污点、亮度和对比度、有效显示尺寸。 Bright points, black spots, bright spots, luminance, contrast ratio and effective display dimension.			
最大可检尺寸 Maximum Inspection Dimension	50 英寸, 屏幕比例 :4:3 或 16:9。 50 inch, Screen scale 4:3 or 16:9.	平均无故障时间 Mean Time to Failure	10000 小时 10000hrs
光学分辨率 Optical Resolution	0.05 毫米 0.05mm	设备电源 Voltage	220 伏, 50 赫兹 220V, 50HZ
检测速度 Efficiency	360 个 / 小时 360pcs/hr	检测环境温度 Ambient Temperature	5 °C ~ 30 °C
功率 Power	1000 瓦 1000W	检测相对湿度 Humidity	<70%
尺寸 / 重量 Dimension/Weight	2 米 × 0.8 米 × 0.8 米 / 100 千克 2m × 0.8m × 0.8m / 100kg	可扩展应用 Expanded Application	可以完成不同尺寸显示器的检测。 Able to inspect monitor of different dimension.
其它特性 Other Characteristics	实时显示检测状态及 NG 品数量报警, 支持远程调试。 Real-time detection status on display, and quantity of NG products warning, supports remote debugging.		



亮点 /Bright points



黑点 /Black spots